

Resilient Seated Gate Valve Rising Stem AWWA C515 OS&Y RSGV

Resilient-Seated Gate Valve AWWA C515 250PSI

Resilient Seated Gate Valve, which is designed and manufactured for use in water, waste water, and sewage. Main usage is for isolation purposes. Full bore design makes it possible to be used bi-directionally and the fluid could clean the sealing surface area every time the valve is opened.



Main Features

- Huge convenience in daily water-using and repairing
If sealing parts in the bonnet are broken, we could replace the sealing parts with the valve completely open when the valve is still in the pipeline.
- Class A sealing (ZERO LEAKAGE)
- 100% testing before packing and delivery.
- Completely free and full bore self-cleaning & low-pressure loss.
- Clockwise closing (CWC) as standard, anticlockwise closing upon request.
- Operation: Manual handwheel, Square Cap, Extension Spindle.
- Bonnet bolts are in Galvanized Carbon Steel, and sealed with hot melt to prevent corrosion. Other materials upon request.
- O-ring bonnet gasket wraps each bolt to prevent corrosion.
- Linear sealing design provides better sealing & lower closing torque.
- WRAS approved for drinking water.

Standards

- Design: AWWA C515
- Flanges: ASME B16.5 / CL150
- Face to face Length: ASME B16.10
- Tests: AWWA C515 / API 598
- Coating: AWWA C550 thickness 250micron

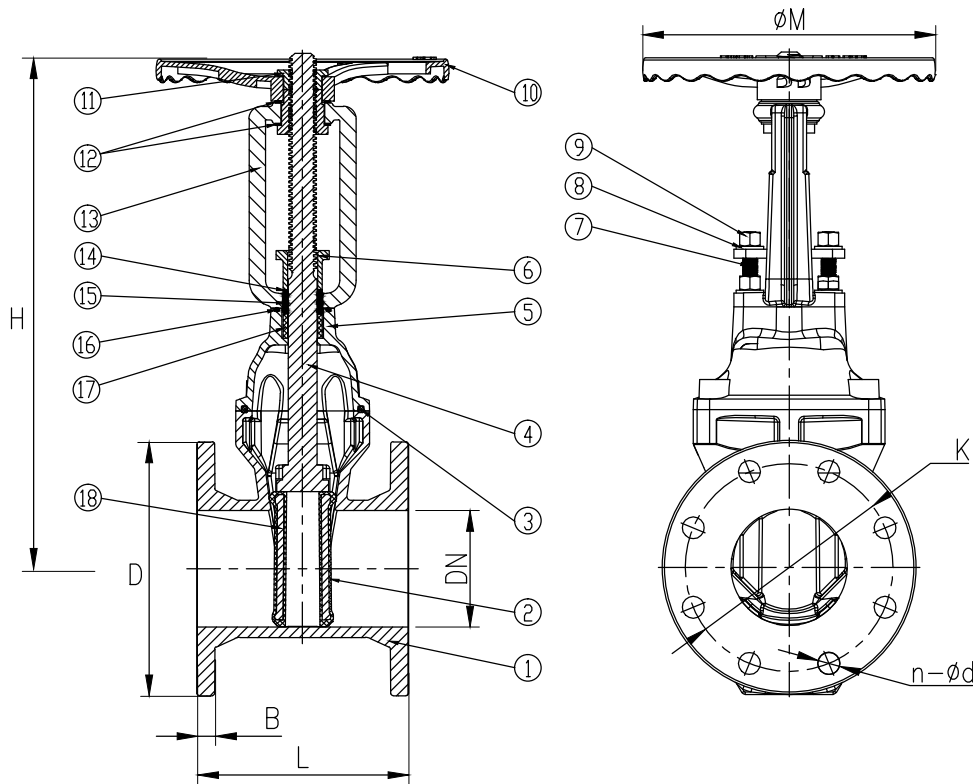
Service Fields

- Water and neutral liquid applications
- Main transmission pipelines
- Irrigation system
- Fire fighting



Resilient Seated Gate Valve Rising Stem AWWA C515 OS&Y RSGV

PART LIST & DIMENSIONS



18	Core	DUCTILE IRON
17	Washer	Phenolic PF
16	O Ring	NBR
15	O Ring	NBR
14	Gasket	POM
13	Holder	DUCTILE IRON
12	Friction Pads	AISI304 STAINLESS STEEL
11	Nut	CuZn39Pb1 Brass
10	Hand Wheel	DUCTILE IRON
9	Nut	AISI304 STAINLESS STEEL
8	Washer	AISI304 STAINLESS STEEL
7	Bolt	AISI304 STAINLESS STEEL
6	Gland	DUCTILE IRON
5	Bonnet	DUCTILE IRON
4	Stem	AISI420 STAINLESS STEEL
3	Bonnet Gasket	NBR
2	Disc	EPDM+DUCTILE IRON
1	Body	DUCTILE IRON

SIZE		Outline (mm)			Flange dimensions (mm)				Switch Turns
		ANSI B16.10	φM	H	ASME B16.1/16.42 Class 125/150				
DN	Inch	L			D	K	n-φd	B	
DN40	1 1/2 "	165	Φ200	290	127	98.5	4-φ16	19	14
DN50	2 "	178	Φ200	290	152	120.5	4-φ19	19	14
DN65	2 1/2 "	190	Φ200	350	178	139.5	4-φ19	22.3	17
DN80	3 "	203	Φ200	375	191	152.5	4-φ19	23.8	20
DN100	4 "	229	Φ254	450	229	190.5	8-φ19	23.8	21
DN125	5 "	254	Φ315	510	254	216	8-φ19	23.8	26
DN150	6 "	267	Φ315	585	279	241.5	8-φ22	25.4	26
DN200	8 "	292	Φ315	735	343	298.5	8-φ22	28.6	34
DN250	10 "	330	Φ406	875	406	362	8-φ22	30.2	43
DN300	12 "	356	Φ406	1015	483	432	12-φ25	31.8	51
DN350	14 "	381	Φ500	1210	535	476.5	12-φ28	35	51
DN400	16 "	406	Φ500	1335	595	540	16-φ28	36.5	58

Designs, materials and specifications shown are subject to change without notice due to our continuing program of product development.